

ANALYTIC SYSTEMS

Power Conversion Solutions

#207 12448 82nd Ave.
Surrey, BC V3W 3E9 CANADA

+1 (604) 543-7378 · phone
1-800-668-3884 · toll free
+1 (604) 543-7354 · fax

www.analyticsystems.com



Benefits

- Ultra-Quiet
- Power sensitive electronics without interference
- Rugged & Reliable
- Ensure years of safe and trouble free operation

Applications

- Oil Patch
- Mobile Offices (TV and Radio Vans)
- Marine / Automotive / RV
- Industrial Controls (OEM Applications)
- Field Work / Construction Sites
- Solar / Alternative Power Systems
- Run any 12V Equipment

DC/DC Converters

VTC65 Series DC/DC Converters

Description

The VTC65 Series of Voltage Converter supplies 13.6V or 27.2 Vdc from 32V, 48V or 72 Vdc power systems for use in heavy equipment, marine, industrial, or alternative energy environments.

State of the Art Switchmode design offers high reliability, high efficiency and minimum size.

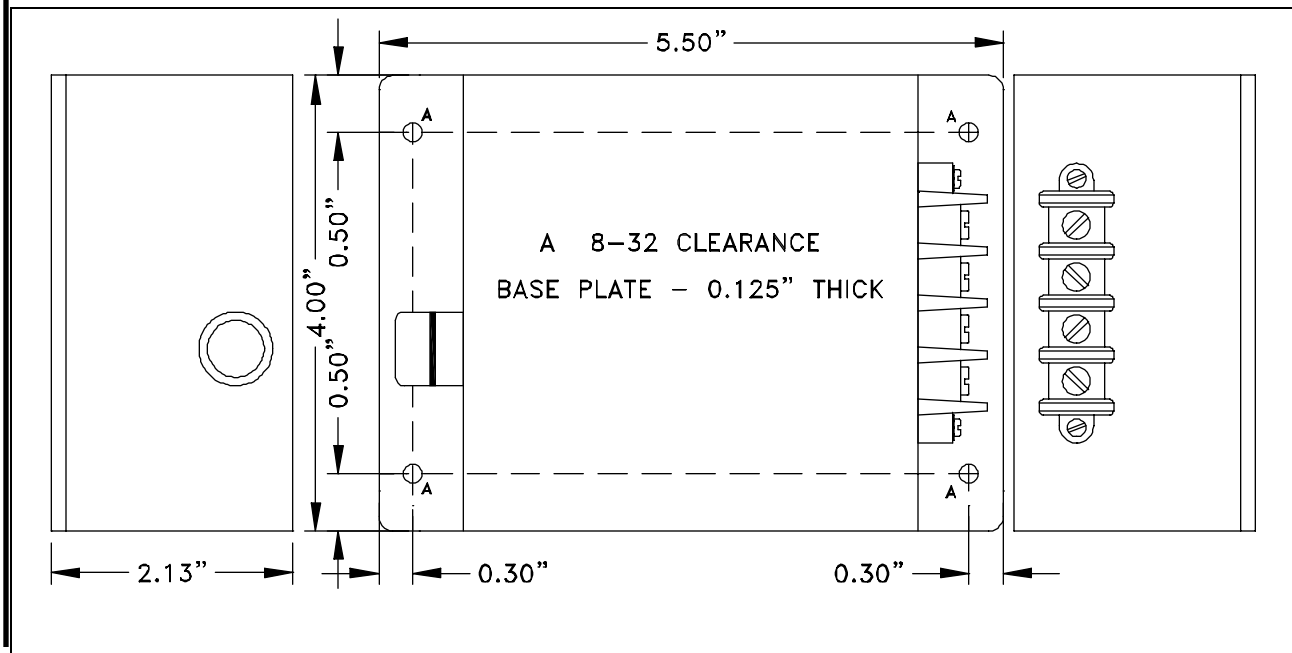
The unit has reverse input protection, output current limiting and output overvoltage protection.

Features

- Input voltage range allows operation from 32, 48, or 72VDC power systems
- Reverse input protection
- Extremely rugged and well suited for marine and other demanding environments
- High tolerance for shock and vibration
- Short circuit protection
- Ultra-quiet low EMI operation
- Output over-voltage crowbar
- Inrush Current Limiting
- Wide operating temperature range
- Easily mounted
- Remote On-Off version available (call factory for details)
- Wide-Temperature operation Available
- Potting to Class 1, Div 2 Standards available
- Conformal Coating and/or Harsh Environment Ruggedization Available
- 3 year parts and labour warranty

VTC65 Series DC/DC Voltage Converter

Mechanical Diagram



Specifications

Electrical (Input)

Input Volts (ip)	32	48	72
Actual (Vdc)	♦ 20 – 45	40 – 65	65 – 100
Input Amps (max)	5.4	2.7	1.7
Input Fuse (MDA)	6	4	3
Noise on Input	< 10 mV		

♦ 30 - 45 Vdc input range for a 24Vdc output

Environmental Specifications

Operating Temp. Range	-25° - +50°C @ maximum output Derate Linearly 2.5% per °C from 40°C (Optional -40°C extra wide temp. operation avail.)
Humidity	0 - 95°C Relative Humidity (non-condensing) with optional conformal coating
Audible Noise	NONE Ødb @ 3 ft
Typical Service Life	> 10 yrs. (87,600 hrs)
Isolation	Any Input or Output to Case 500 VDC Input to Output – Common Negative

Electrical (Output)

Output Nominal (op)	12	24
Output Volts (DC)	13.6 ± 0.05	27.2 ± 0.05
Output Crowbar	16.0 ± 0.5V	32.0 ± 1.0 V
Output Amps	5 cont. / 7 peak	2.5 cont. / 3.0 peak
Output Adjustment	± 0.5	
Output Ripple & Noise	< 10 mV	
Transient Response	< 1V for 50% Surge	
Regulation (Line & Load)	< +/- 0.5%	
Duty Cycle	Peak 20% for 10 min maximum Continuous 100% for 24 hours per day	
Efficiency	> 88% @ Maximum Output	

Mechanical Specifications

Length	5.5 in / 14.0 cm
Width	4.0 in / 10.2 cm
Height	2.1 in / 5.3 cm
Material	Marine Grade Aluminium
Finish	Black Anodize / Powder Epoxy Coat
Fastenings	All 18-8 Stainless Steel
Weight	0.8 lb / 0.4 kg
Connections	Four contact output terminals
Warranty	3 years

Available From:



ANALYTIC SYSTEMS
Quality since 1976

#207 12448 82nd Ave.
Surrey, BC V3W 3E9 CANADA
+1 (604) 543-7378 • phone
1-800-668-3884 • toll free
+1-604-543-7354 • fax
www.analyticsystems.com